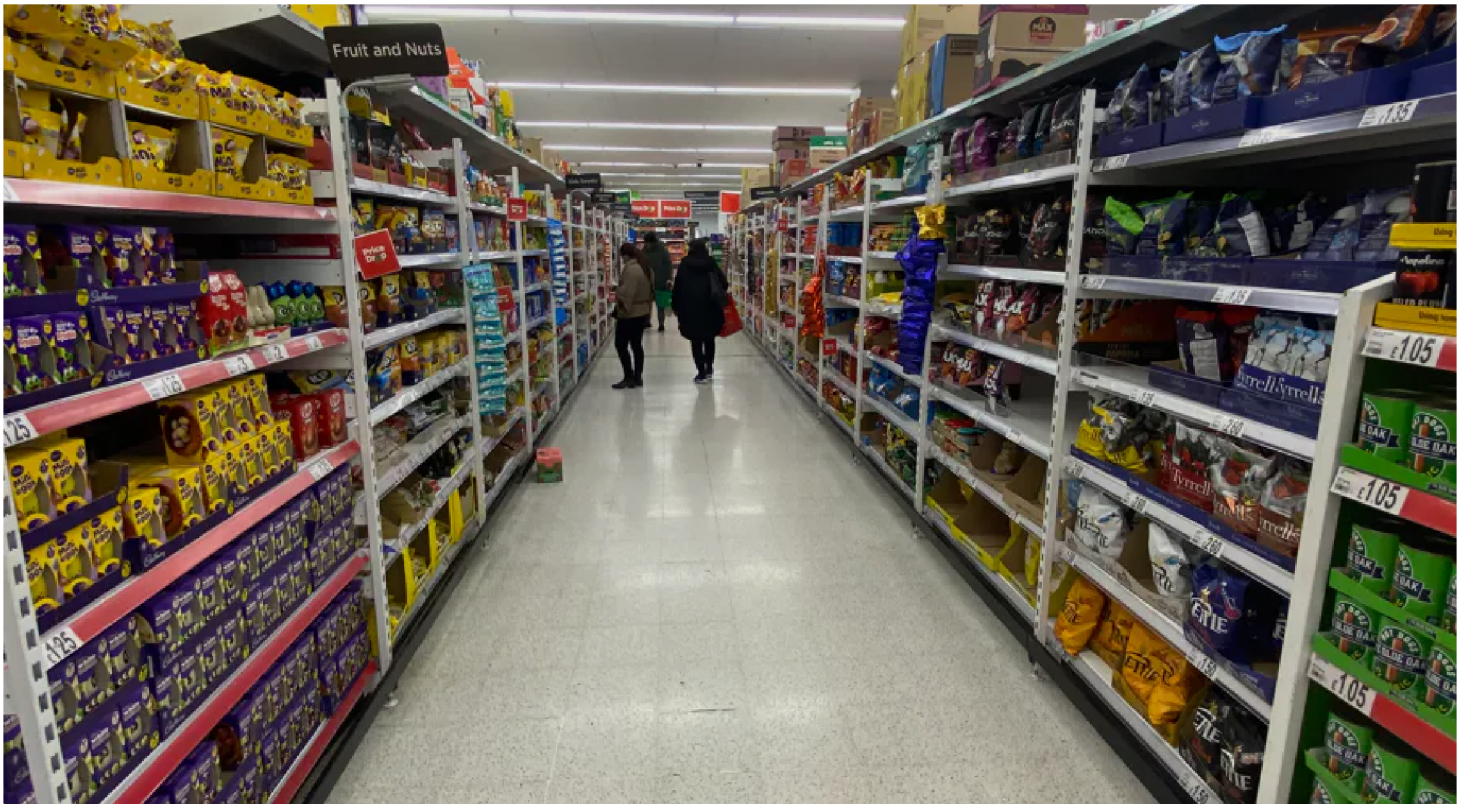


Wisbech Asda workers announce strike dates



Workers at Wisbech have announced their strike dates.

Around 170 Wisbech Asda workers will walk out from 00:01 to 23:59 on Friday 29 and Saturday 30 March – Easter weekend.

The strike has been caused by cuts to hours and an increase in a bullying management culture.

Workers are also angry about poor levels of training and support for their job roles, the equal pay claim dragging on for years, health, safety and fire safety issues being ignored and a lack of collective bargaining with GMB Union.



Wisbech will become just the second Asda store to face strike action, after more than 100 GMB members walked out at Gosport last month.

Keith Dixon, GMB Regional Organiser said:

“Asda Wisbech workers will strike during Easter weekend, one of the supermarket’s busiest weekends of the year.

“They face cuts to hours, non-existent training, toxic management and multiple health, safety and fire failings.

“Cash is being extracted from the business from the top and workers in stores are on the frontline of the cuts.

“Asda workers in Wisbech know it’s not good enough.”

Press office

07958 156846

press.office@gmb.org.uk

Member requiring help?

Click to contact your local GMB Region

info@gmb.org.uk

