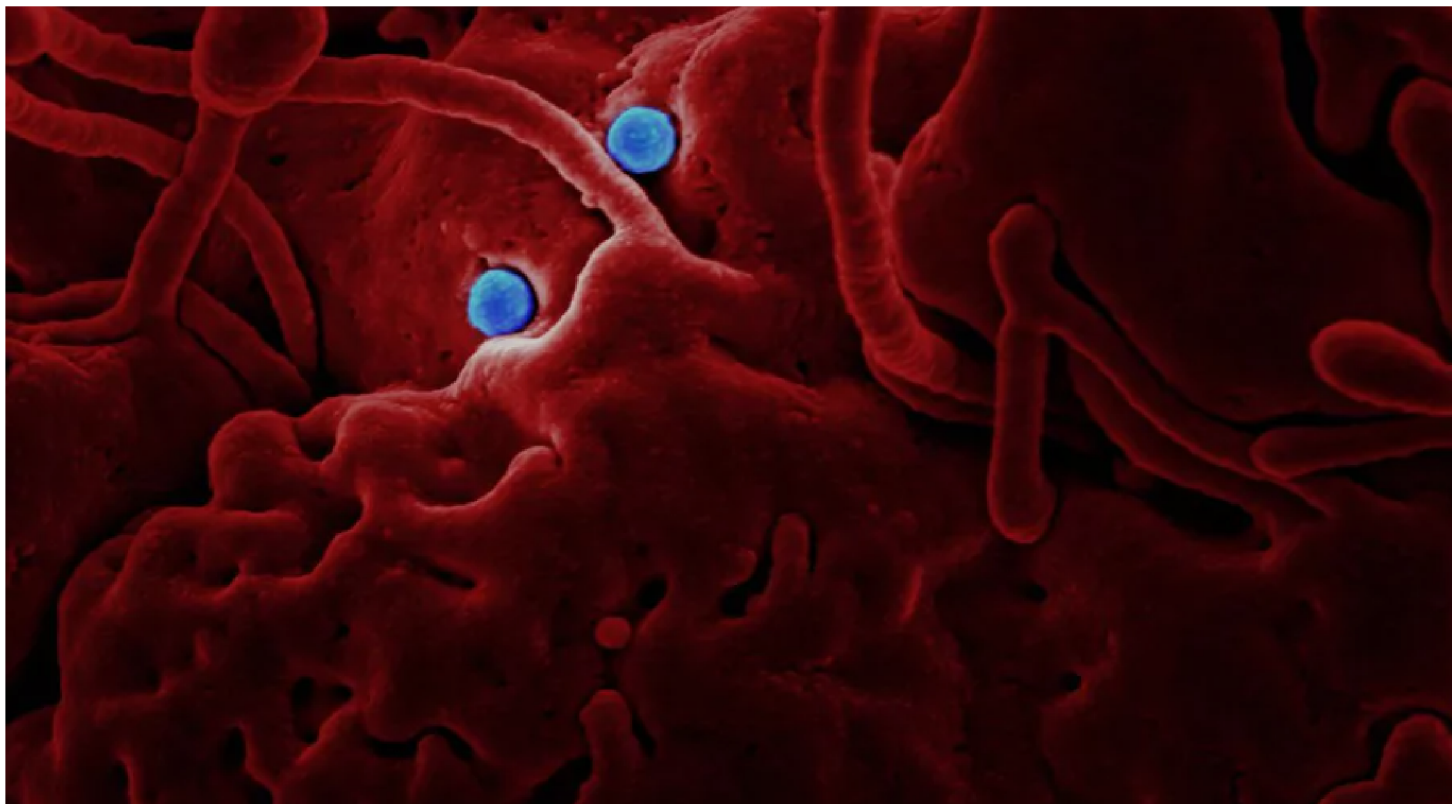


# Govt covid workplace guidance

## 'not fit for purpose'



**GMB, Britain's general union, has commented on the Government's new covid-19 workplace guidance.**

**Dan Shears, GMB National Health and Safety Officer, said:**

"Nobody wants to get Britain back working more than GMB, but it has to be safely. The Government's guidance is still not fit for purpose.

"It is not clear enough on the protective measures that employers must take and the policy on the provision of PPE - particularly face masks - is potentially dangerous for those workers who have been



shielding and will be going back to workplaces where social distancing will not be maintained at all, let alone at 1m plus.

"Shielding workers who cannot work from home will be expected to return to workplace that are 'covid-safe'.

"This guidance still does not provide confidence or assurance that workplaces will actually be safe even if this guidance is followed.

"We need spot inspections and enforcement, especially if a second wave of Covid infections is to be avoided this winter.

---

### **Press office**

079859 1525698

[press.office@gmb.org.uk](mailto:press.office@gmb.org.uk)

### **Member requiring help?**

Click to contact your local GMB Region

[info@gmb.org.uk](mailto:info@gmb.org.uk)

